

EV-301 / EV-601 interface panel wiring details for SP Mode

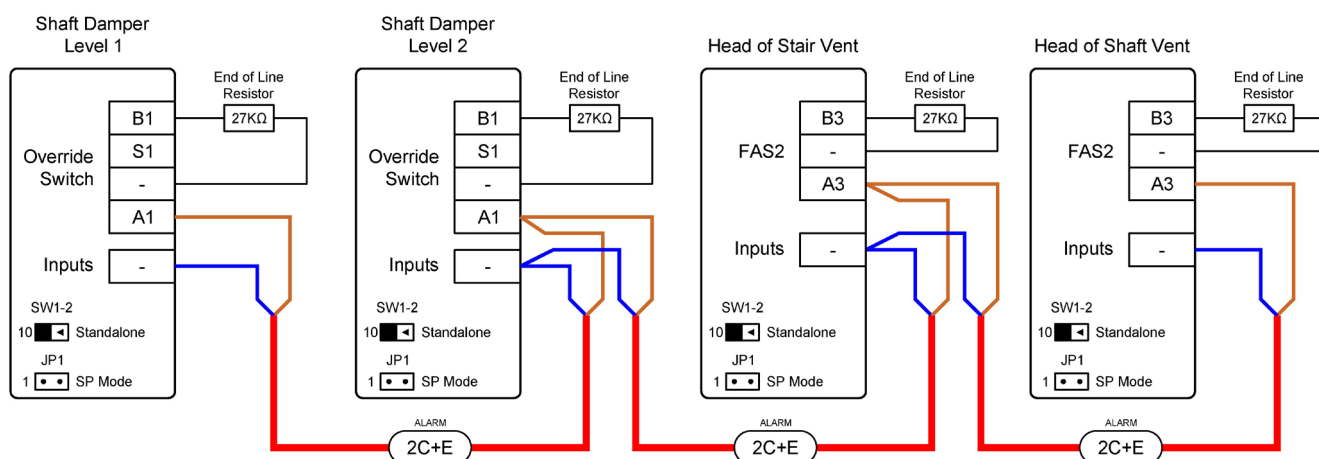
Basic Shaft System (SP Mode) is enabled by removing the JP1-1 Mode jumper link.



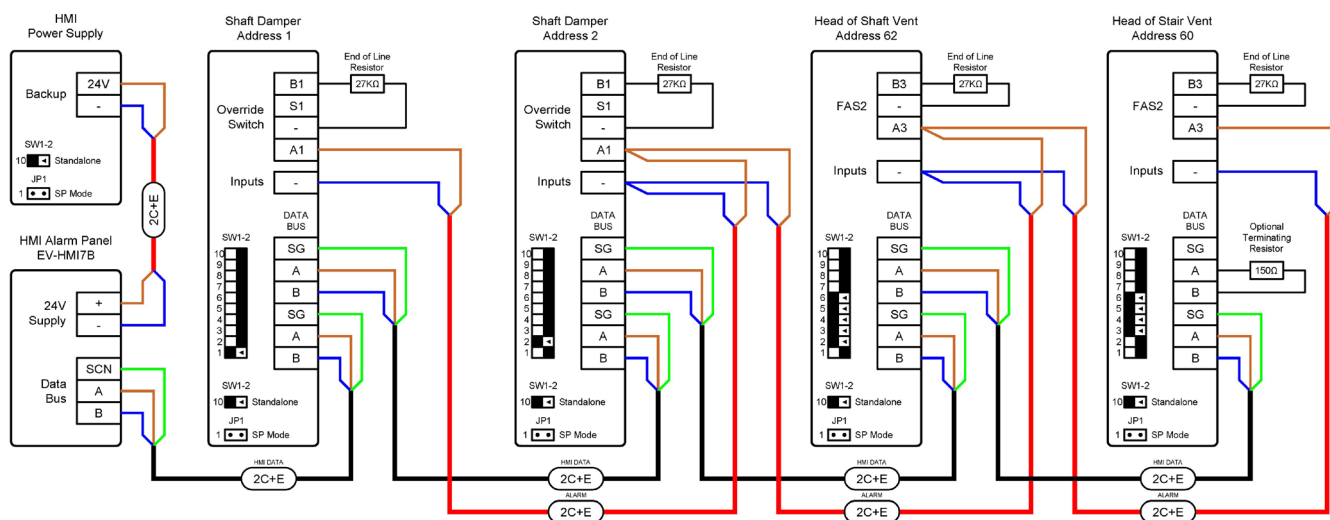
DANGER:

Risk of electrocution. Works on this equipment should only be carried out by a qualified and competent electrical person. Observe all electrical safety regulations and safe systems of work. Check power supply has been isolated or disconnected safely before removing equipment covers.

Typical system wiring diagram



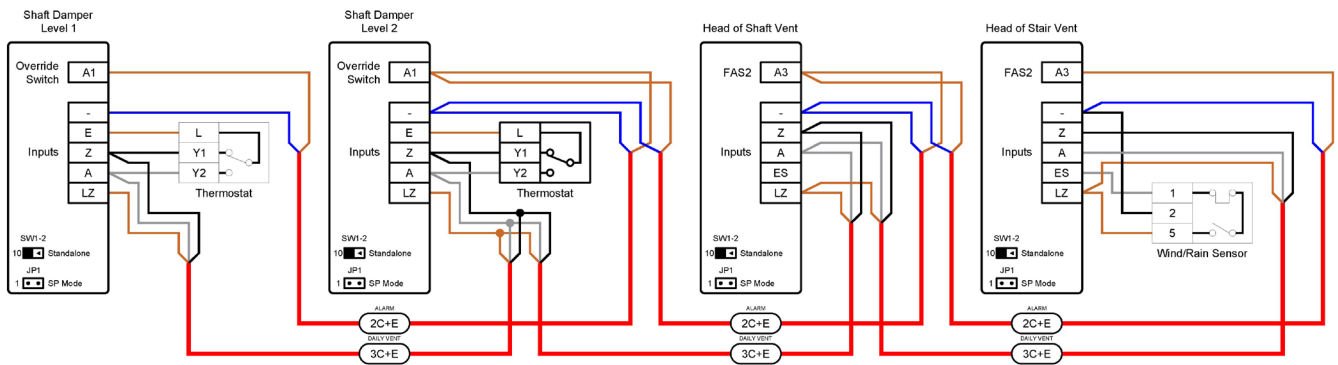
System wiring diagram with Basic HMI



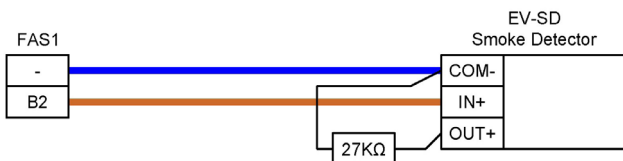
Wiring details continue on next page

INSTRUCTIONS (CONTINUED)

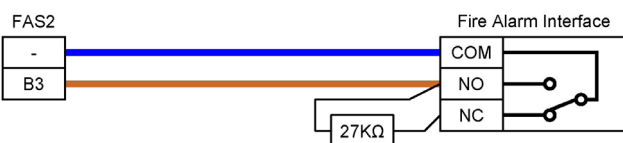
System wiring diagram with common daily ventilation



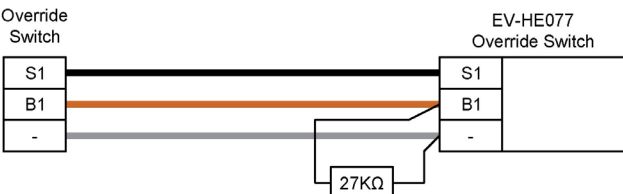
Smoke Detectors



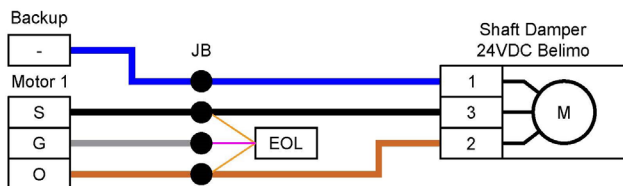
Fire Alarm Interfaces



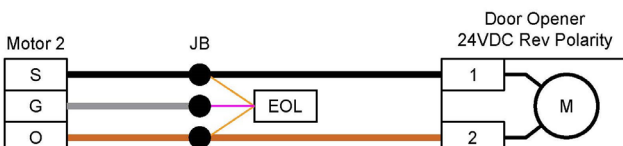
Override Switches



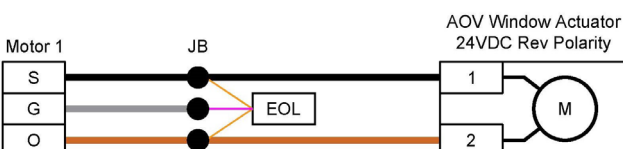
Smoke Damper



Door Opener

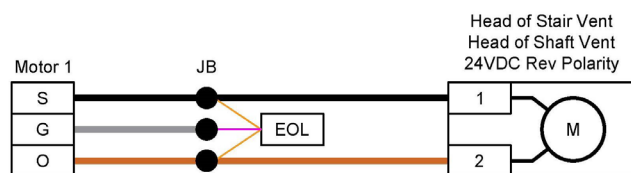


AOV / Window Actuator



INSTRUCTIONS (CONTINUED)

Head of Stair Vent



Thermostat



Wind / Rain Sensor



Daily Ventilation Switch



ATTENTION: Under the Construction Products Regulations (CPR) it is a legal requirement to use only certified products for smoke ventilation. It is the responsibility of the installer to ensure installations meet the relevant standards.

Group SCS reserves the right to alter the specification of its products from time to time without notice. Although every effort has been made to ensure the accuracy of the information contained in this document it is not warranted or represented by Group SCS to be a complete and up-to-date description. For further information visit www.groupscs.co.uk