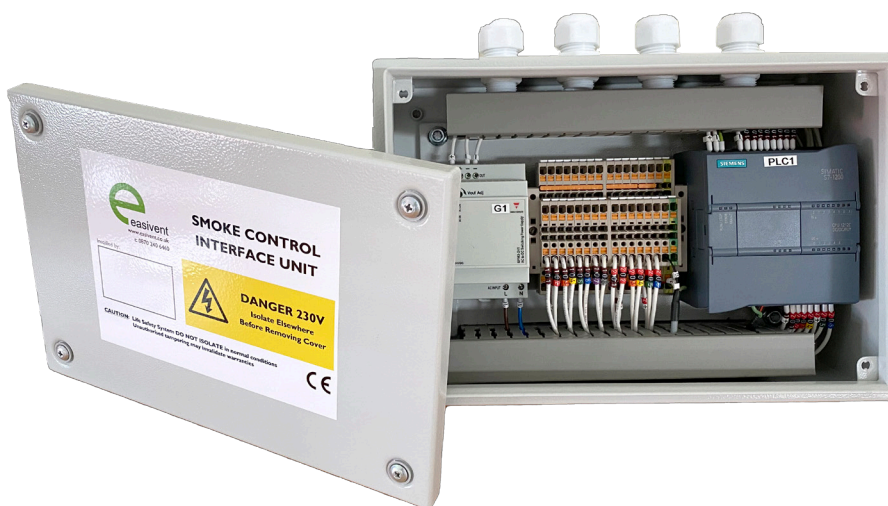


EV-IOD Interface Panel.

EV-IOD

The EV-IOD is a digital input/output device with 8 digital inputs and 6 relay outputs for receipt of signals from third party systems, typically fire alarm or BEMS and control of ancillary items such as fans. For use with the EV-DCP main control panel range.



INPUT & OUTPUT

8 digital inputs and 6 relay outputs with expansion options.

CONNECTIONS

Connects to master control panels for complex cause & effect strategies via Modbus or EV Interface panel data network connectivity options.

CONFORMITY

CE Marked to low voltage and EMC Directives

MANUFACTURER

Easivent

SUITABLE FOR:



MECHANICAL VENTILATION



MULTIZONE



NATURAL VENTILATION



BMS



SMOKE CONTROL



NETWORKING



DAILY VENTILATION



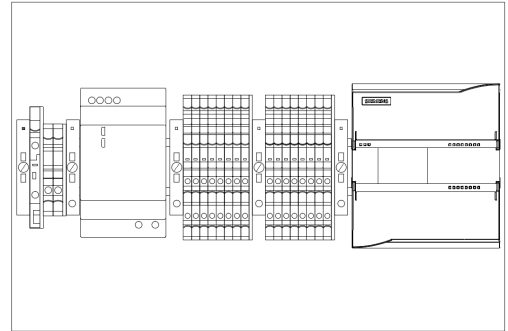
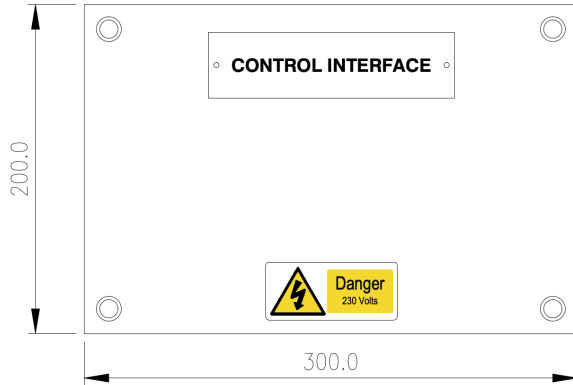
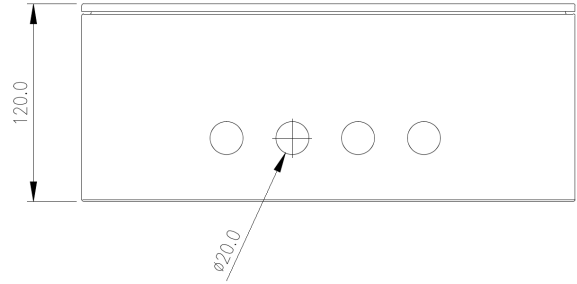
CAR PARKS

KEY INFO / SPECIFICATIONS

Cable Entries	Top
IP Rating	IP66
Voltage input	230V AC 50Hz maintained
Operating temperature	-5 to +50 °C ambient temperature
Finish	Mild steel, RAL 7035 light grey powder-coated finish
Dimension	H:200mm x W:300mm x D:120mm
Weight	3 Kg

TECHNICAL DRAWINGS

- Dimensions specified in mm
- Mild Steel
- Powder Coated Grey RAL 7035
- on - IP66
- Top
- Wall Mounting



VARIATIONS

EV-IOD Interface Panel

Model number	Variation
EV-IOD-8Q6	Modbus Interface Panel, 8 Inputs, 6 Outputs

ATTENTION: Under the Construction Products Regulations (CPR) it is a legal requirement to use only certified products for smoke ventilation. It is the responsibility of the installer to ensure installations meet the relevant standards.

SCS Group reserves the right to alter the specification of its products from time to time without notice. Although every effort has been made to ensure the accuracy of the information contained in this document it is not warranted or represented by SCS Group to be a complete and up-to-date description. For further information visit www.groupscs.co.uk